



6 St. Fagans Rise, Cardiff

Cardiff

In Excess of £140,000



6 St. Fagans Rise

Cardiff, Cardiff

Charming 2-bed ground floor maisonette with spacious living area, and convenient location. No chain, move-in ready. Perfect for first-time buyers, downsizers, or investors. Viewing highly recommended!

Council Tax band: C

Tenure: Leasehold

EPC Energy Efficiency Rating: C

EPC Environmental Impact Rating: C

- Vacant with No Chain
- Ground Floor Split Level Maisonette
- Two Well Proportioned Bedrooms
- Downstairs WC

Hallway

Step into a bright and spacious hallway, illuminated by natural light from a window beside the UPVC front door with a glass panel. Complete with a radiator and under-stair cupboard for storage. Doors lead to the W/C, the front-facing kitchen, and the rear living room, while a staircase ascends to the first-floor landing.

Kitchen

Positioned at the front of the property, the kitchen features a UPVC window above the sink, offering a pleasant view of the green common area. It is well-equipped with upper and lower cabinetry, an integrated gas hob, oven, and extractor fan, along with designated space for a washing machine and fridge freezer. The room is finished with tiled flooring, partially tiled walls, and an additional cupboard, ideal for use as a pantry.

Lounge

A bright and inviting carpeted living room, a large UPVC double-glazed window allowing plenty of natural light, a radiator for warmth, and an electric fire for added comfort.

WC

Conveniently located on the ground floor, this space features a low-level W/C and a frosted UPVC double-glazed window for privacy and natural light.

Landing

The staircase leads to a well-lit landing, providing access to two bedrooms and the shower room.

Bedroom One

Situated at the rear of the property, this spacious and bright double bedroom is carpeted for comfort and features a large UPVC double-glazed window and a radiator for warmth.

Bedroom Two

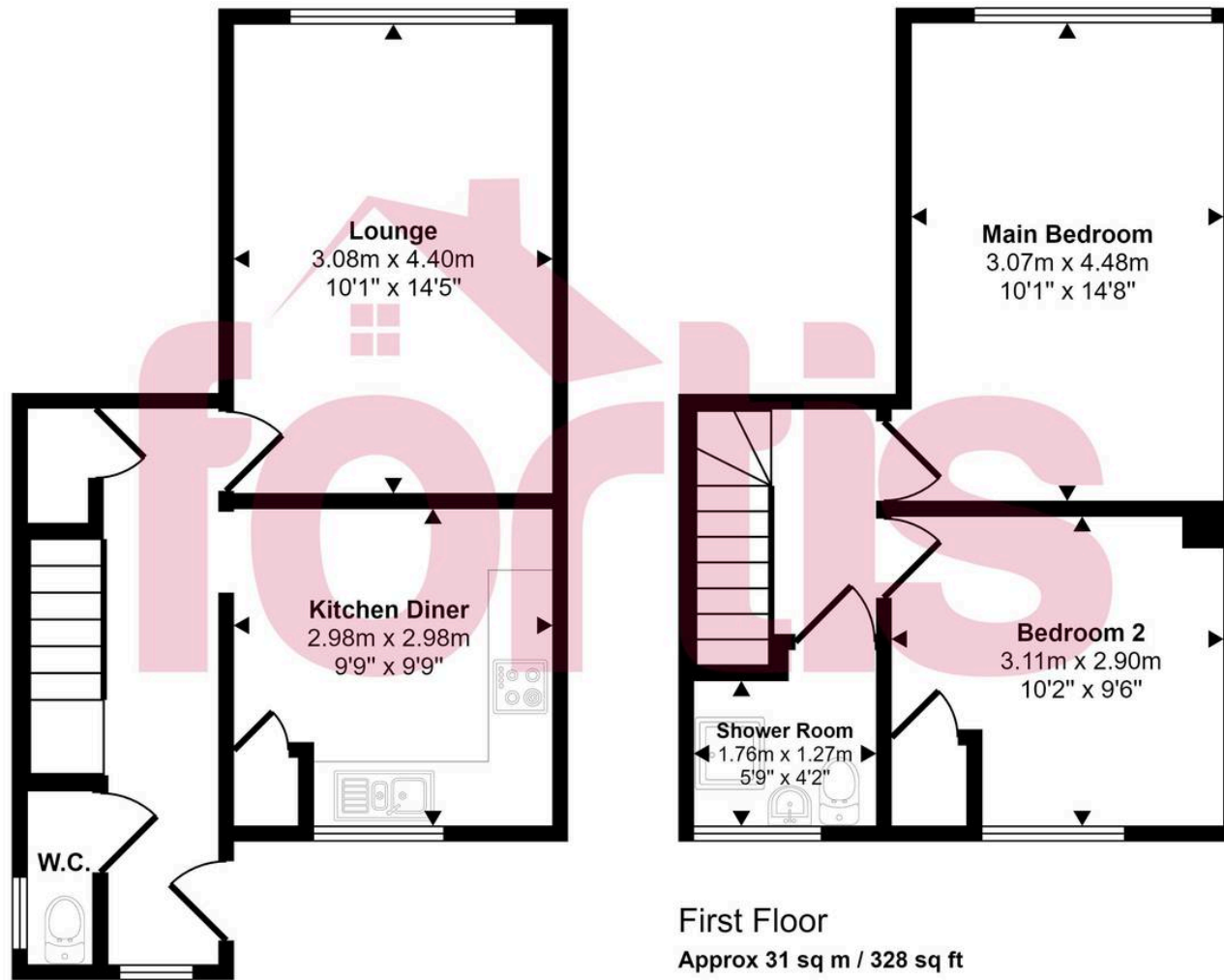
Located at the front of the property, this bright and spacious single bedroom features a UPVC double-glazed window, and an additional storage cupboard.

Shower Room

A well-appointed, fully tiled bathroom featuring a walk-in shower, low-level W/C, and wash basin. The space is enhanced by a large frosted UPVC double-glazed window for privacy and natural light, along with a radiator for added comfort.



Approx Gross Internal Area
63 sq m / 683 sq ft



This floorplan is only for illustrative purposes and is not to scale. Measurements of rooms, doors, windows, and any items are approximate and no responsibility is taken for any error, omission or mis-statement. Icons of items such as bathroom suites are representations only and may not look like the real items. Made with Made Snappy 360.