



50 Aldsworth Road, Cardiff
Cardiff

£200,000





50 Aldsworth Road

Cardiff, Cardiff

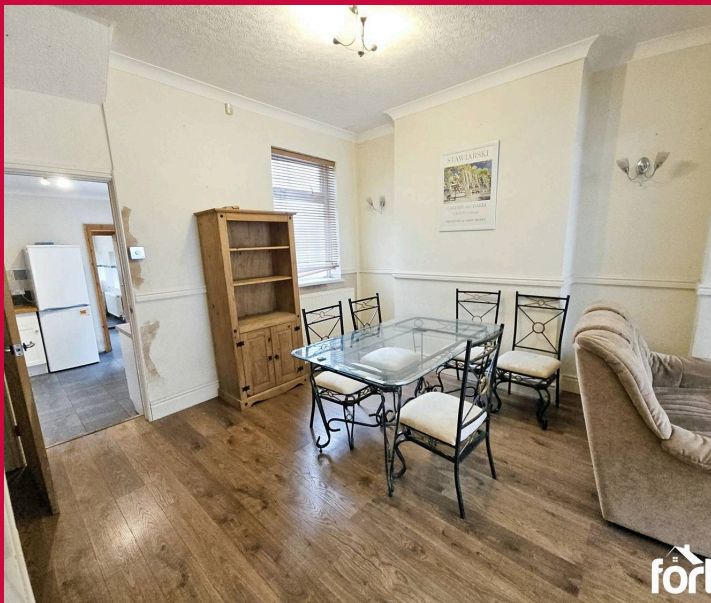
This traditional terraced property presents a wonderful opportunity for those seeking a charming home in a sought-after location. Council Tax band: D

Tenure: Freehold

EPC Energy Efficiency Rating: E

EPC Environmental Impact Rating: E

- No Chain
- Traditional Terraced Property
- Two Reception Rooms
- TLC Required
- Perfect First Time Buy



Entrance

Accessed via double glazed front door with inset obscured panels, pat tiled walls, leading to:

Hall

Laminate wood flooring, ceiling spot lights, coved ceiling, radiator.

Living Room

Double glazed bay window to the front, laminate flooring, feature fire place, with wooden surround and mantle, alcove with shelving and built in cupboard, dado rail, ceiling light point, coved ceiling, opening to:

Dining Room

Double glazed rear aspect window, ceiling light point, coved ceiling, dado rail, wall light points, radiator, laminate wood flooring, door to:

Kitchen

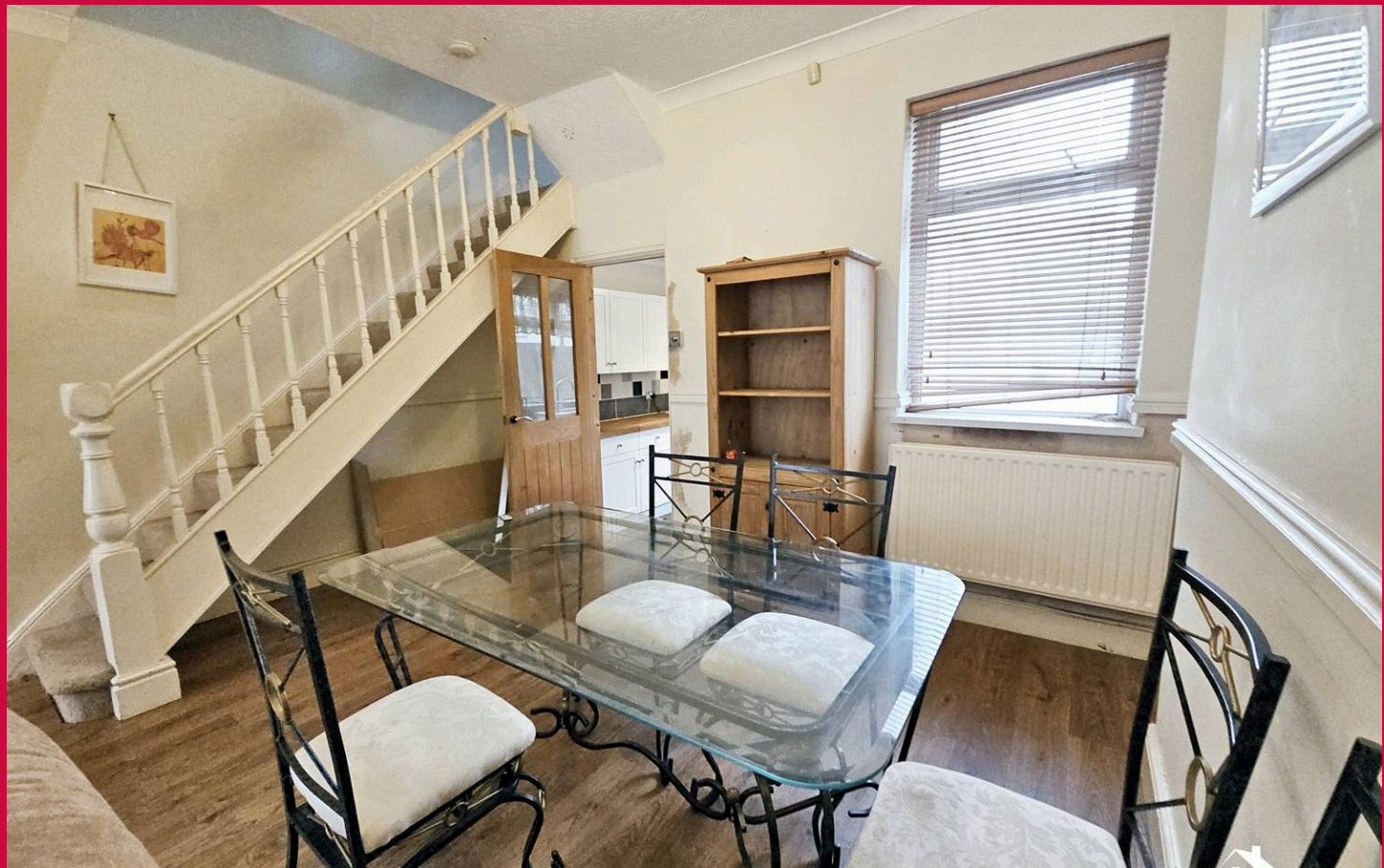
Fitted with a modern range of wall and base level cupboard and drawer units with solid wood work surfaces over, inset ceramic one and a half bowl sink and drainer with mixer tap, tiled splash back, space for cooker, dish washer and fridge freezer, tiled floor, ceiling light point, coved ceiling, double glazed window to the side, radiator, door to:

Rear Lobby

Double glazed door to the garden, ceiling light point, radiator, door to utility cupboard with space and plumbing for washing machine with counter top above, shelving, tiled flooring, ceiling light point,

Bathroom

A four piece white suite comprising panel enclosed bath with tiled surround, corner shower cubical with electric shower, pedestal wash basin, low level WC with push button dual flush, 3 x double glazed windows to the side and rear, tiled flooring, radiator, ceiling light point.





First Floor Landing

Accessed via stairs from the ground floor, traditional style spindled balustrade, built in storage cupboard, ceiling spot lights. loft access point, doors to:

Bedroom One

A good sized double bedroom with 2 x double glazed front aspect windows, built in wardrobes, ceiling light points, radiator.

Bedroom Two

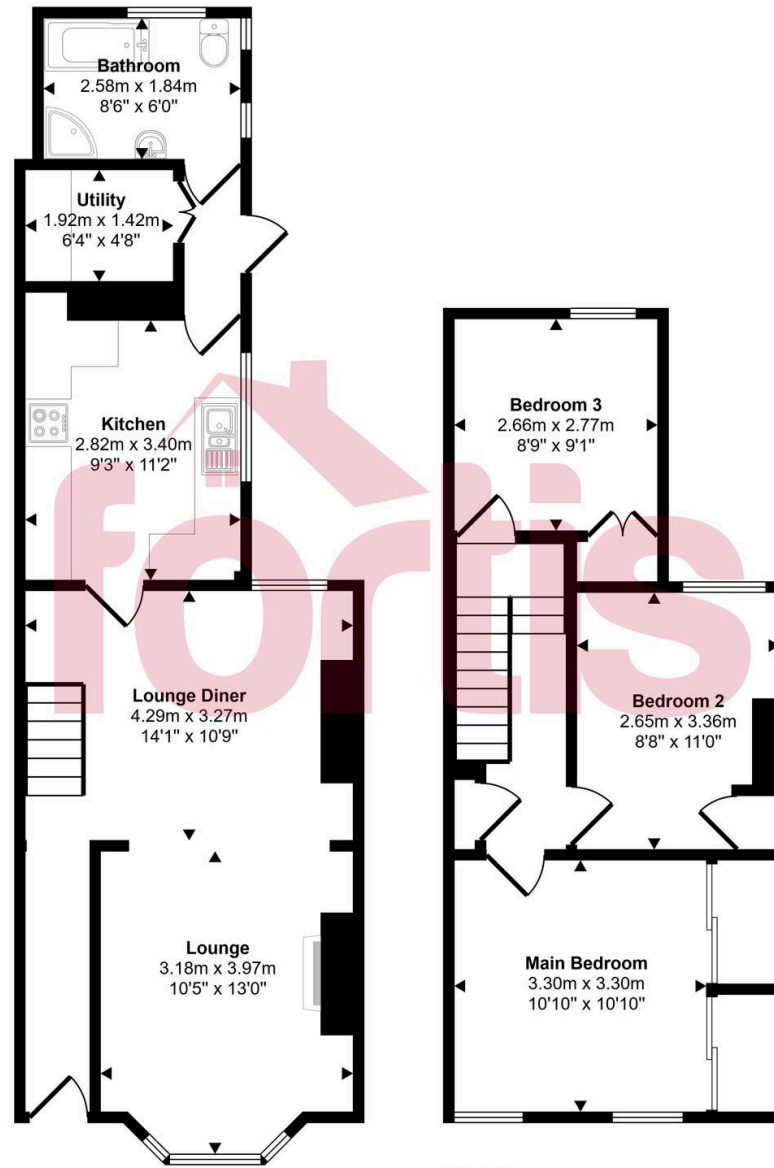
Double glazed rear aspect window, ceiling light point, coved ceiling, built in storage, radiator.

Bedroom Three

Double glazed rear aspect window, part pitched ceiling, ceiling light point, built in storage, radiator.



Approx Gross Internal Area
89 sq m / 957 sq ft



Ground Floor
Approx 50 sq m / 542 sq ft

First Floor
Approx 39 sq m / 415 sq ft

This floorplan is only for illustrative purposes and is not to scale. Measurements of rooms, doors, windows, and any items are approximate and no responsibility is taken for any error, omission or mis-statement. Icons of items such as bathroom suites are representations only and may not look like the real items. Made with Made Snappy 360.

GARDEN

There is a good sized garden the rear, mainly laid to lawn with patio are adjoining the house. To the front is a small courtyard garden behind a low level wall, path to the front door.

