



22 Greenland Crescent, Cardiff

Cardiff

£145,000

FORTIS
Estate Agents



22 Greenland Crescent

Cardiff, Cardiff

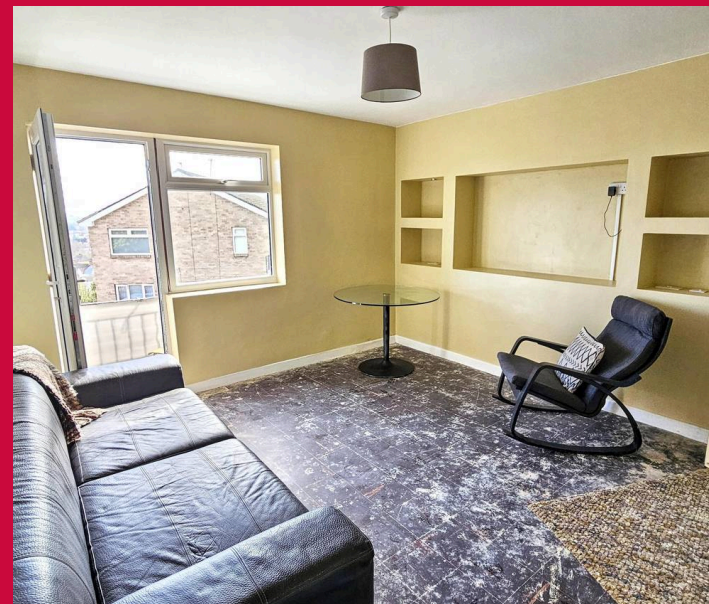
Modern two-bedroom flat with spacious living area, open balcony with views, sleek kitchen and bathroom, large windows, and no onward chain. Ideal for first-time buyers or downsizers. Council Tax band: C

Tenure: Leasehold

EPC Energy Efficiency Rating: C

EPC Environmental Impact Rating: C

- Two Bedrooms
- Beautifully Appointed Bathroom
- Open Balcony
- No Chain
- Views



Entrance Hall

Upon entering, you are greeted by a spacious main hallway featuring a ceiling light and a central heated radiator, which seamlessly leads into the kitchen, creating a bright and open layout.

Kitchen

The kitchen boasts stylish light blue cabinetry with sleek back handles, complemented by a light cream worktop and additional overhead cabinets for ample storage. The kitchen is fitted with a gas hob with an extractor and offers plenty of space for stand-alone appliances. Black tiled flooring flows throughout, and a double-glazed window frames picturesque views, enhancing the sense of space and light.

Lounge / diner

The living room is perfect for relaxing or entertaining, featuring a modern media wall as its focal point. It also includes a centrally heated radiator and ceiling light. Double-glazed doors lead out to a balcony which affords stunning views out across Cardiff, the Bristol Channel and beyond, while a side window invites additional natural light and captures the beautiful surroundings.

Bedroom One

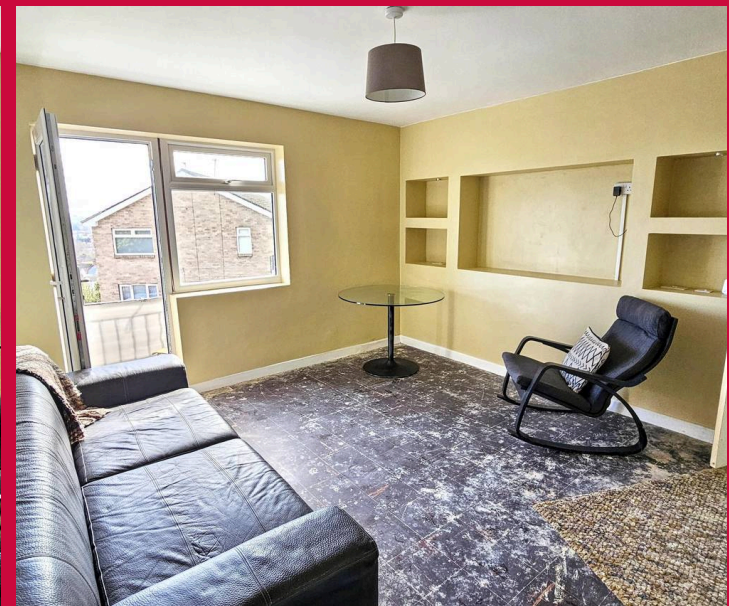
The main bedroom offers a peaceful retreat with a ceiling light, radiator, double-glazed window, and built-in storage, providing a comfortable and practical space for rest and relaxation.

Bedroom Two

The second bedroom is equally inviting, featuring carpeted flooring, a ceiling light, radiator, double-glazed window, and additional built-in storage. The storage houses a newly installed central heating boiler, complete with a 5-year warranty. This versatile space is ideal for family members, guests, or a home office.

Bathroom

The bathroom is beautifully presented in a calming sage green palette, complete with patterned flooring, two double-glazed frosted windows, a toilet, sink, and a bath/shower combination featuring a stylish panel design and glass screen, complemented by white wall tiling.





Entrance Hall

Upon entering, you are greeted by a spacious main hallway featuring a ceiling light and a central heated radiator, which seamlessly leads into the kitchen, creating a bright and open layout.

Kitchen

The kitchen boasts stylish light blue cabinetry with sleek back handles, complemented by a light cream worktop and additional overhead cabinets for ample storage. The kitchen is fitted with a gas hob with an extractor and offers plenty of space for stand-alone appliances. Black tiled flooring flows throughout, and a double-glazed window frames picturesque views, enhancing the sense of space and light.

Lounge / diner

The living room is perfect for relaxing or entertaining, featuring a modern media wall as its focal point. It also includes a centrally heated radiator and ceiling light. Double-glazed doors lead out to a balcony which affords stunning views out across Cardiff, the Bristol Channel and beyond, while a side window invites additional natural light and captures the beautiful surroundings.

Bedroom One

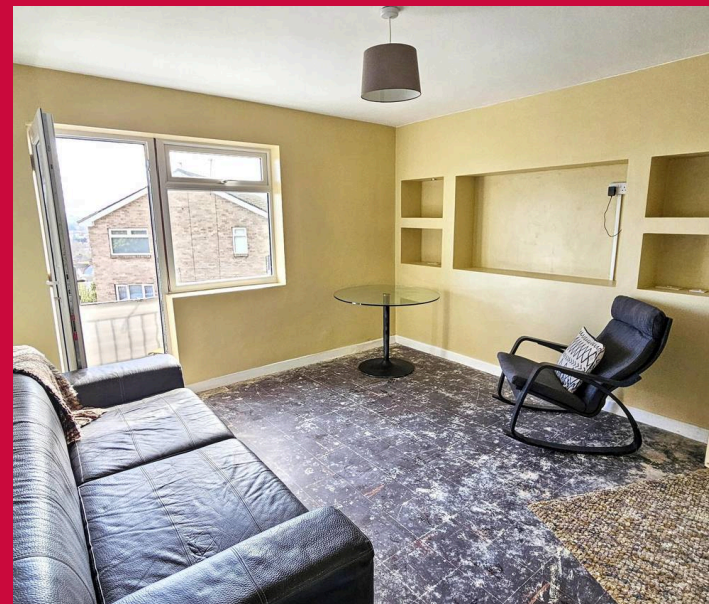
The main bedroom offers a peaceful retreat with a ceiling light, radiator, double-glazed window, and built-in storage, providing a comfortable and practical space for rest and relaxation.

Bedroom Two

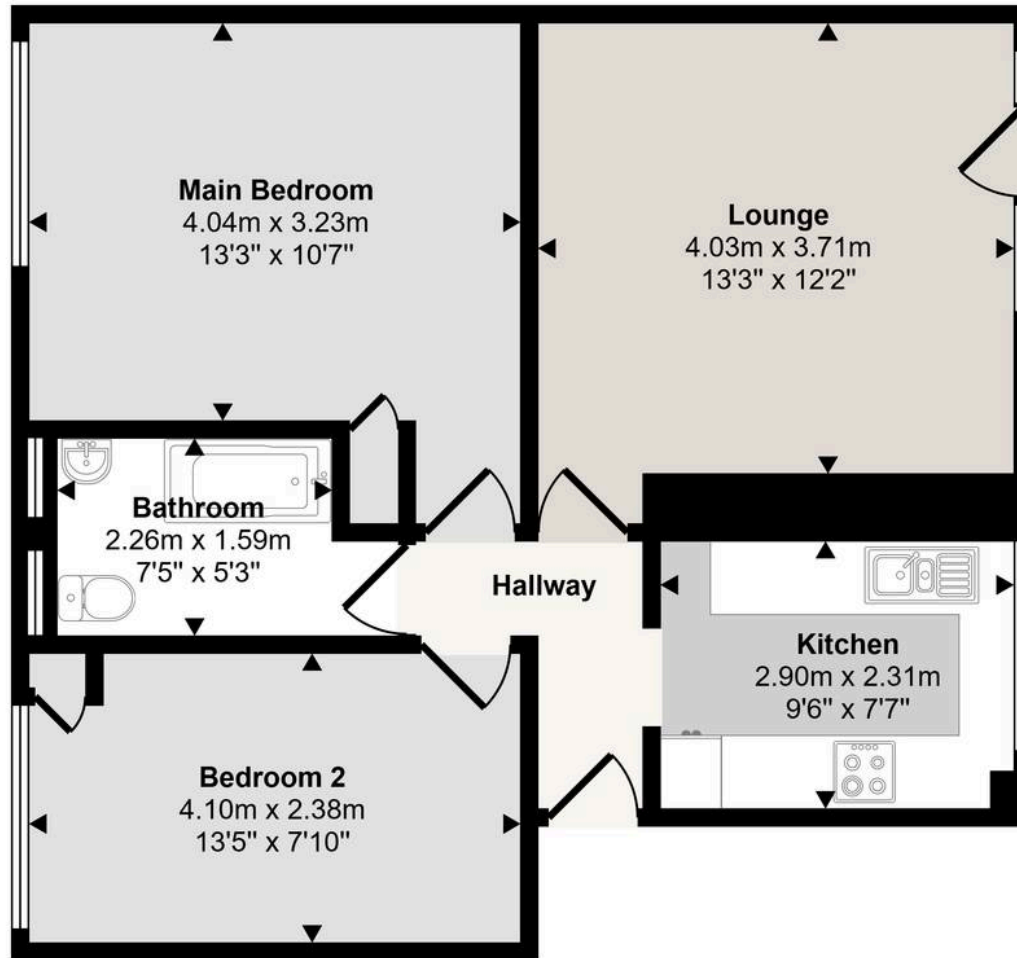
The second bedroom is equally inviting, featuring carpeted flooring, a ceiling light, radiator, double-glazed window, and additional built-in storage. The storage houses a newly installed central heating boiler, complete with a 5-year warranty. This versatile space is ideal for family members, guests, or a home office.

Bathroom

The bathroom is beautifully presented in a calming sage green palette, complete with patterned flooring, two double-glazed frosted windows, a toilet, sink, and



Approx Gross Internal Area
58 sq m / 623 sq ft



Floorplan

This floorplan is only for illustrative purposes and is not to scale. Measurements of rooms, doors, windows, and any items are approximate and no responsibility is taken for any error, omission or mis-statement. Icons of items such as bathroom suites are representations only and may not look like the real items. Made with Made Snappy 360.

BALCONY

ON STREET

1 Parking Space

On street parking

