



FORTIS
Estate Agents

5 Windrush Place, Cardiff
£275,000

FORTIS
Estate Agents



5 Windrush Place

Cardiff, Cardiff

Spacious three double bedroom terraced house with two reception rooms, modern kitchen and bathroom (his and her sinks). No forward chain. Ideal for families. Book a viewing today. Council Tax band: D

Tenure: Freehold

EPC Energy Efficiency Rating: D

EPC Environmental Impact Rating: D

- 3 Double Bedrooms
- Low Maintenance Garden
- No forward chain
- 'His & Her' Sinks
- 2 Reception Rooms

Porch

As you enter the property, you are welcomed into a bright porch through a glazed, window-paned door. The porch benefits from two large windows that flood the space with natural light, while the red tiled flooring and generous proportions provide ample space for coats and shoes.

Hallway

Stepping through a wooden framed door with a large glazed panel, you enter the hallway which provides access to all ground floor rooms, along with a contemporary staircase featuring a wooden handrail and metal balustrades leading to the first floor. The hallway also offers carpeted flooring, a radiator, ceiling light point, and useful under-stairs storage.

Living Room / Dining Room

The spacious open plan living and dining room is fully carpeted throughout, creating a warm and comfortable atmosphere. The living area features patio doors opening onto the rear garden, along with a radiator and ceiling light point. The dining area enjoys a large window allowing plenty of natural light to fill the room, complemented by additional radiators and lighting.

Kitchen

The kitchen is fitted with black tiled flooring and offers space for freestanding appliances. Dark worktops pair beautifully with the warm wood cabinetry, while glass-fronted upper cupboards and stainless steel handles provide a clean and sophisticated finish. Black slate splash back tiles add a stylish touch, and the sink is positioned beneath a window overlooking the rear garden. The kitchen also includes a built-in stainless steel electric oven, four-burner gas hob, and chimney-style extractor hood, along with a ceiling light point and a door leading directly to the garden.

Bedroom One

Upstairs, the main bedroom features carpeted flooring, a large double window allowing plenty of natural light, two built-in storage spaces, a radiator, and ceiling light point.

Bedroom Two

Bedroom two is also well presented with carpeted flooring





Porch

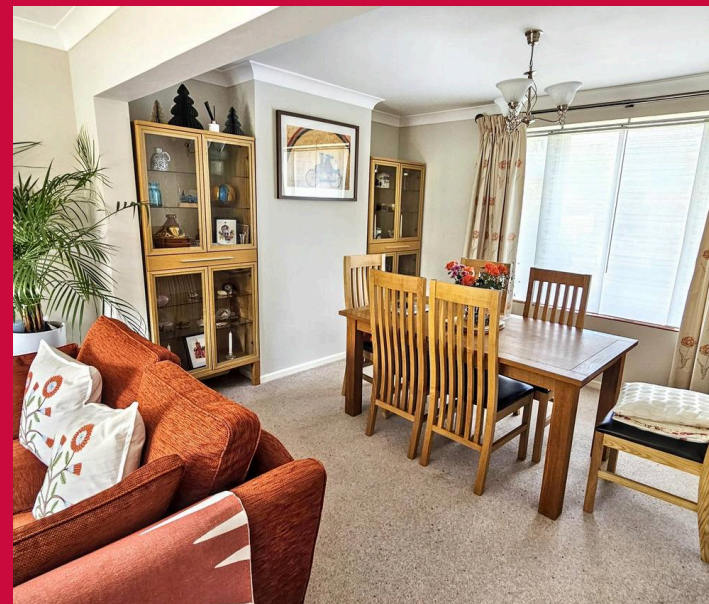
As you enter the property, you are welcomed into a bright porch through a glazed, window-paned door. The porch benefits from two large windows that flood the space with natural light, while the red tiled flooring and generous proportions provide ample space for coats and shoes.

Hallway

Stepping through a wooden framed door with a large glazed panel, you enter the hallway which provides access to all ground floor rooms, along with a contemporary staircase featuring a wooden handrail and metal balustrades leading to the first floor. The hallway also offers carpeted flooring, a radiator, ceiling light point, and useful under-stairs storage.

Living Room / Dining Room

The spacious open plan living and dining room is fully carpeted throughout, creating a warm and comfortable atmosphere. The living area features patio doors opening onto the rear garden, along with a radiator and ceiling light point. The dining area enjoys a large window allowing plenty of natural light to fill the room, complemented by additional radiators and lighting.



Kitchen

The kitchen is fitted with black tiled flooring and offers space for freestanding appliances. Dark worktops pair beautifully with the warm wood cabinetry, while glass-fronted upper cupboards and stainless steel handles provide a clean and sophisticated finish. Black slate splash back tiles add a stylish touch, and the sink is positioned beneath a window overlooking the rear garden. The kitchen also includes a built-in stainless steel electric oven, four-burner gas hob, and chimney-style extractor hood, along with a ceiling light point and a door leading directly to the garden.

Bedroom One

Upstairs, the main bedroom features carpeted flooring, a large double window allowing plenty of natural light, two built-in storage spaces, a radiator, and ceiling light point.

Porch

As you enter the property, you are welcomed into a bright porch through a glazed, window-paned door. The porch benefits from two large windows that flood the space with natural light, while the red tiled flooring and generous proportions provide ample space for coats and shoes.

Hallway

Stepping through a wooden framed door with a large glazed panel, you enter the hallway which provides access to all ground floor rooms, along with a contemporary staircase featuring a wooden handrail and metal balustrades leading to the first floor. The hallway also offers carpeted flooring, a radiator, ceiling light point, and useful under-stairs storage.

Living Room / Dining Room

The spacious open plan living and dining room is fully carpeted throughout, creating a warm and comfortable atmosphere. The living area features patio doors opening onto the rear garden, along with a radiator and ceiling light point. The dining area enjoys a large window allowing plenty of natural light to fill the room, complemented by additional radiators and lighting.

Kitchen

The kitchen is fitted with black tiled flooring and offers space for freestanding appliances. Dark worktops pair beautifully with the warm wood cabinetry, while glass-fronted upper cupboards and stainless steel handles provide a clean and sophisticated finish. Black slate splash back tiles add a stylish touch, and the sink is positioned beneath a window overlooking the rear garden. The kitchen also includes a built-in stainless steel electric oven, four-burner gas hob, and chimney-style extractor hood, along with a ceiling light point and a door leading directly to the garden.

Bedroom One

Upstairs, the main bedroom features carpeted flooring, a large double window allowing plenty of natural light, two built-in storage spaces, a radiator, and ceiling light point.

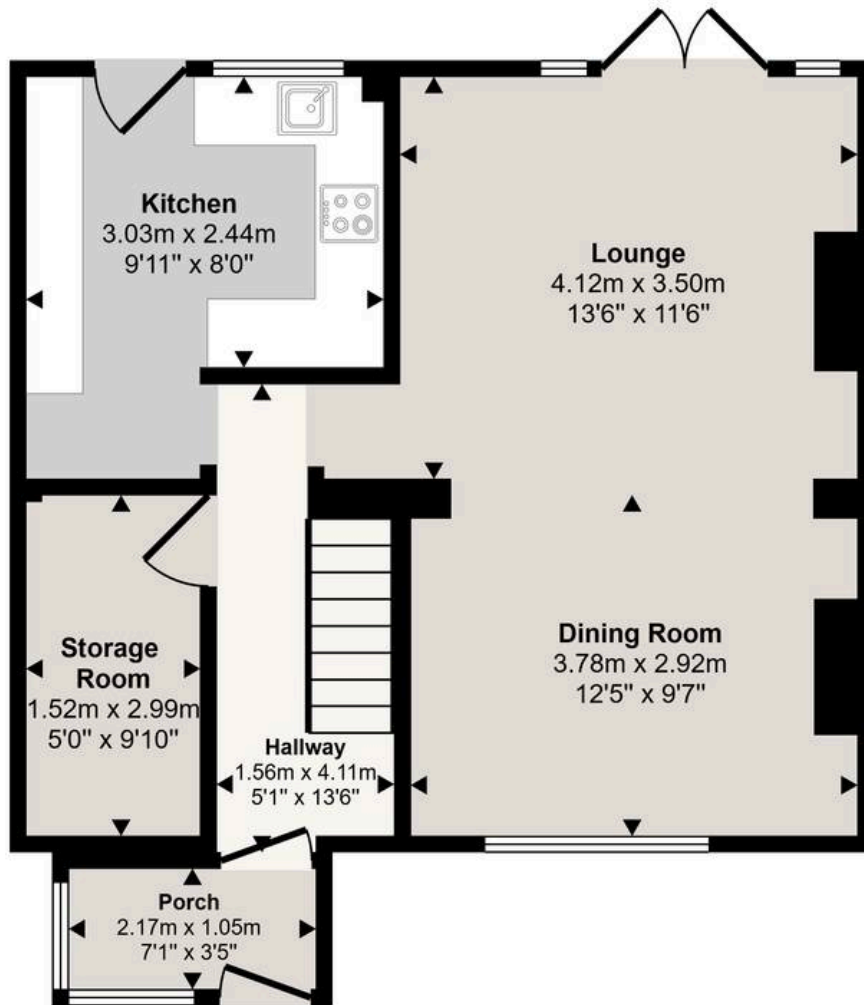
Bedroom Two

Bedroom two is also well presented with carpeted flooring

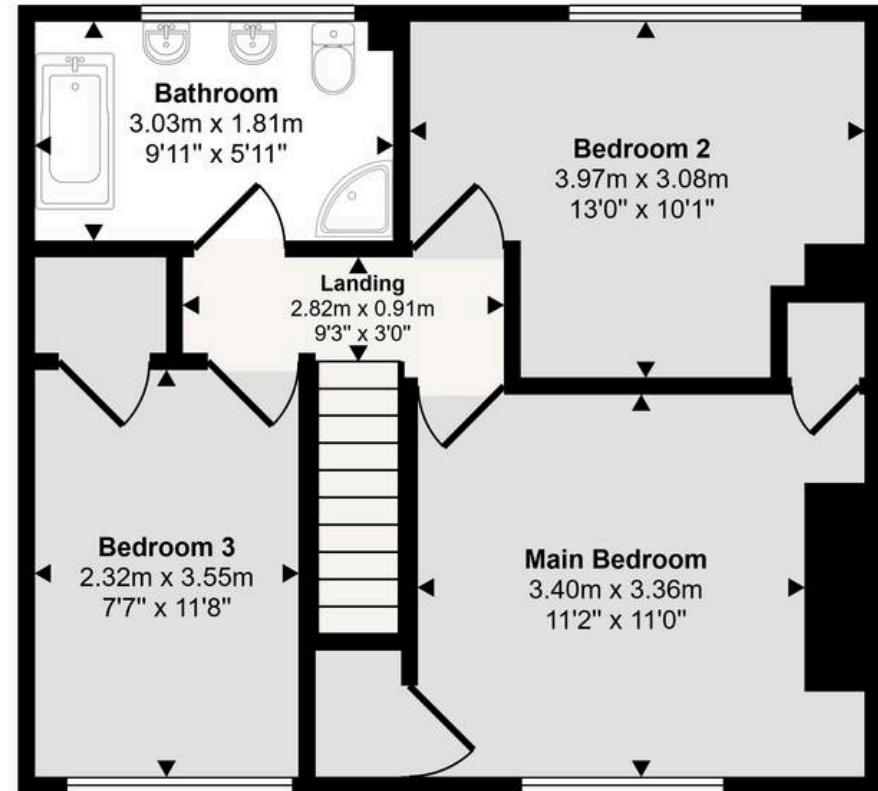




Approx Gross Internal Area
98 sq m / 1057 sq ft



Ground Floor
Approx 51 sq m / 546 sq ft



First Floor
Approx 47 sq m / 511 sq ft

This floorplan is only for illustrative purposes and is not to scale. Measurements of rooms, doors, windows, and any items are approximate and no responsibility is taken for any error, omission or mis-statement. Icons of items such as bathroom suites are representations only and may not look like the real items. Made with Made Snappy 360.



Porch

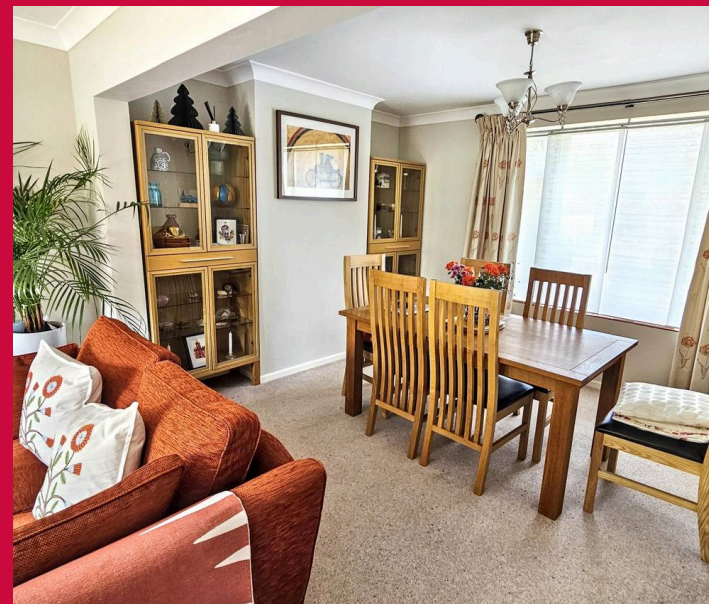
As you enter the property, you are welcomed into a bright porch through a glazed, window-paned door. The porch benefits from two large windows that flood the space with natural light, while the red tiled flooring and generous proportions provide ample space for coats and shoes.

Hallway

Stepping through a wooden framed door with a large glazed panel, you enter the hallway which provides access to all ground floor rooms, along with a contemporary staircase featuring a wooden handrail and metal balustrades leading to the first floor. The hallway also offers carpeted flooring, a radiator, ceiling light point, and useful under-stairs storage.

Living Room / Dining Room

The spacious open plan living and dining room is fully carpeted throughout, creating a warm and comfortable atmosphere. The living area features patio doors opening onto the rear garden, along with a radiator and ceiling light point. The dining area enjoys a large window allowing plenty of natural light to fill the room, complemented by additional radiators and lighting.

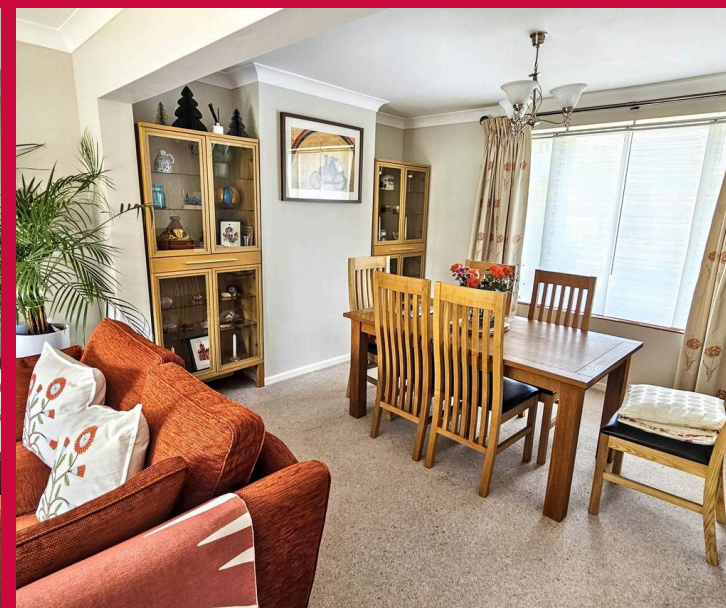


Kitchen

The kitchen is fitted with black tiled flooring and offers space for freestanding appliances. Dark worktops pair beautifully with the warm wood cabinetry, while glass-fronted upper cupboards and stainless steel handles provide a clean and sophisticated finish. Black slate splash back tiles add a stylish touch, and the sink is positioned beneath a window overlooking the rear garden. The kitchen also includes a built-in stainless steel electric oven, four-burner gas hob, and chimney-style extractor hood, along with a ceiling light point and a door leading directly to the garden.

Bedroom One

Upstairs, the main bedroom features carpeted flooring, a large double window allowing plenty of natural light, two built-in storage spaces, a radiator, and ceiling light point.





Fortis

Fortis Properties, 2A Fairwater Green – CF5 3BA

02920 561111 • hello@fortis.homes •